

Product Specifications

NAME: USA Standard Touch Panel Dimmer

MODEL: TM11U



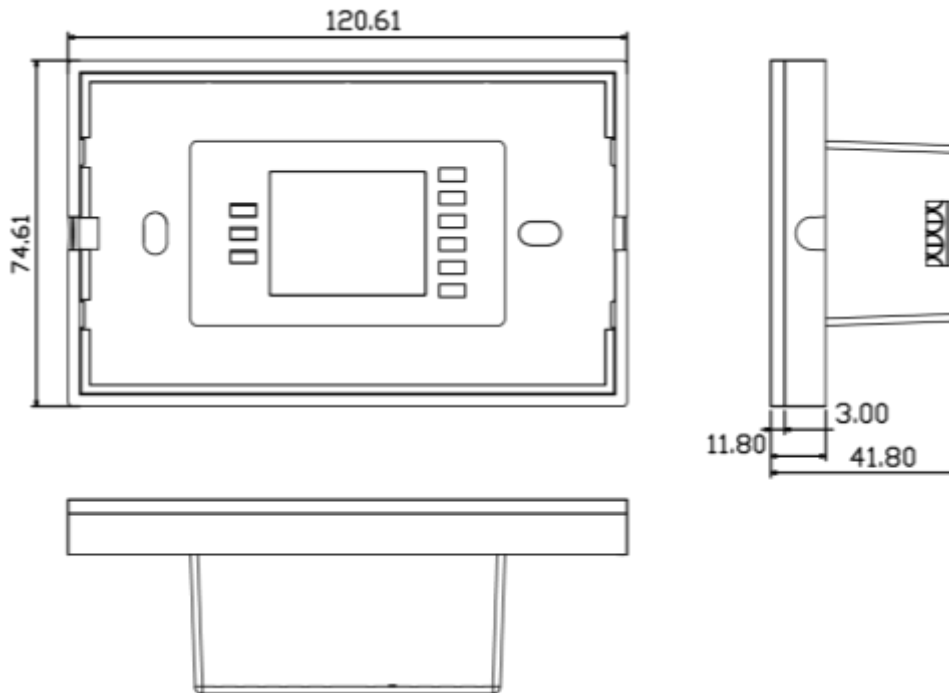
Summarization

American standard triac dimmer adopts the advanced micro-control unit, with Europe standard housing, uses high-voltage MOS transistor as the control circuit to achieve trailing edge dimming. It inherits the advantages of low-voltage controllers, adopts glass panel design, is beautiful and fashionable in appearance. It adopts high precision capacitance touch control chip, increases the touch sensitivity, reduces trigger which caused by mistake. It is used for controlling a variety of lamps which connects with triac power supply, and also can be connected with high-voltage LED load light; it has many advantages such as convenient to connect, easy to use and others. It provides more comfortable, safer, convenient intelligent lighting control than traditional lighting control, optimizes experience of people on the lighting control, which gives user a new, comfortable lighting environment.

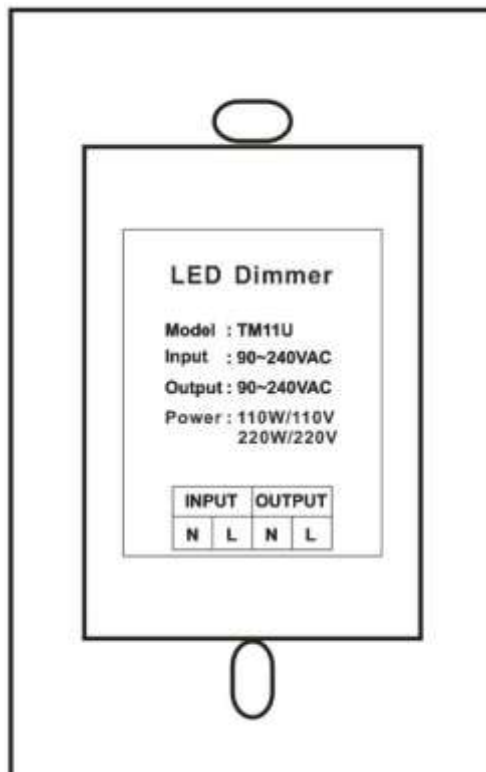
Technical Parameters

- Working temperature: -20-60 °C
- Supply voltage: AC90-240V (50Hz-60Hz)
- Output: 1 channel
- External dimension: L74 X W120 X H41.8 mm
- Packing size: L145 X W99 X H53 mm
- Net weight: 181g
- Gross weight: 238g
- Static power consumption: <3W
- Output current: <1A
- Output power: 110V: <110W, 220V: <220W
- Dimming method: Trailing edge dimming

External Dimension



Interface Specifications



INPUT: power input interface, input voltage range is 90-240V AC, 50-60Hz;

OUTPUT: output interface of triac dimming signal, output voltage range is 90-240VAC, 50-60Hz, maximum output current is 1A.

Instruction for use



: it can adjust brightness 0-255 according to the color on the slider when touching by your finger;



: you could turn on/off controller at any state; When the dimmer is turned on, long press the key for 3 seconds, you can turn on/off output of buzzer;

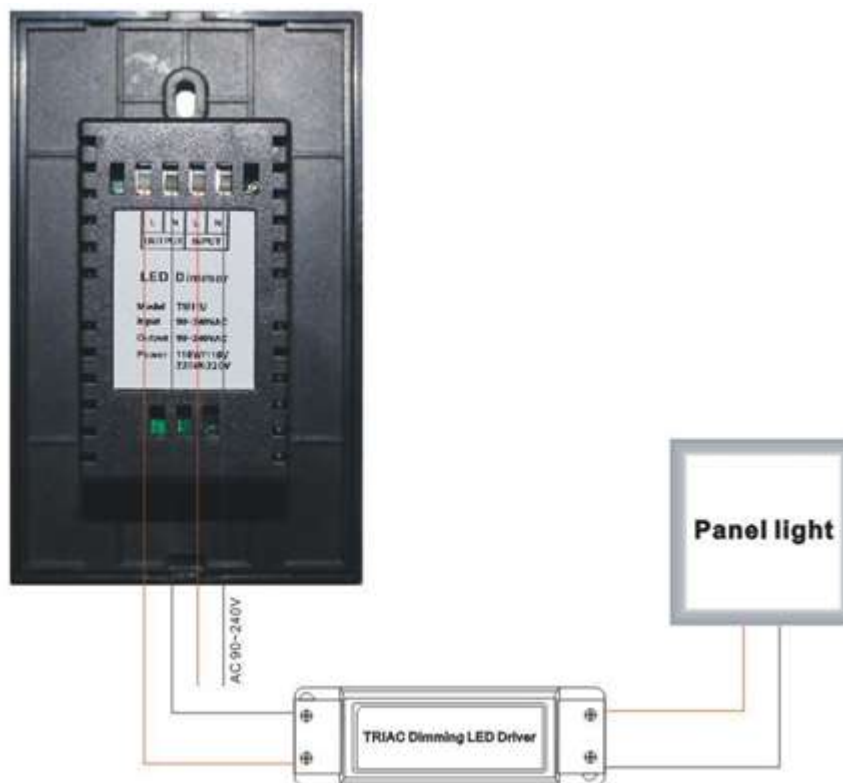


: brightness reduce key, each short press, brightness reduce 1, with long press, it could reduce brightness quickly until the darkest;



: brightness increase key, each short press, brightness increase 1, with long press, it could increase brightness quickly until the brightest;

Typical Application



Installation Method

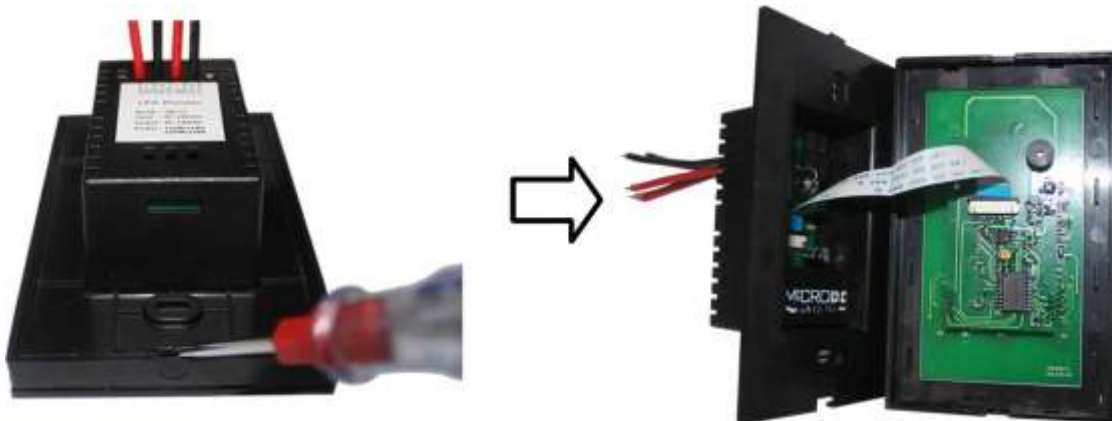
1. Wiring

Connect wiring according to typical application. Refer to typical application;



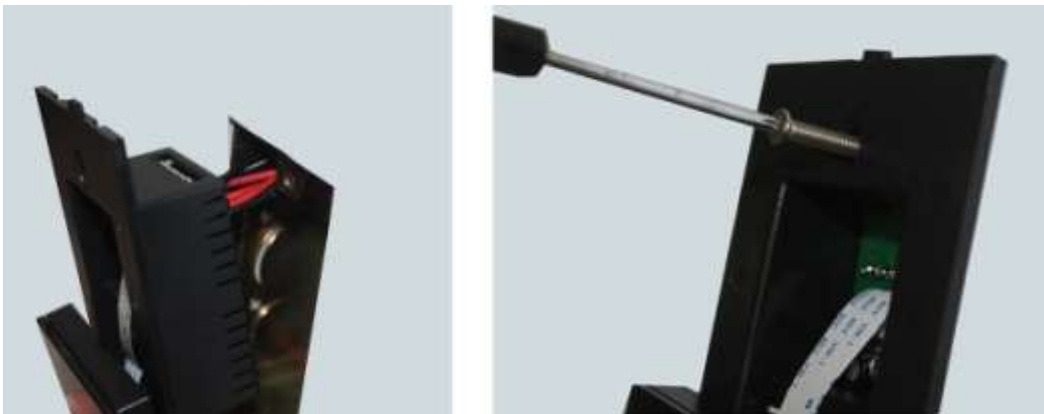
2. Open touch panel

Gently pry gaps in touch panel with a screwdriver, and then you can slowly remove the panel;



3. Install switch base

As shown in the picture, mount the controller on the cassette in the wall after connecting the wire, and then nail the screw, fix it on the wall, finally you can install the switch pedestal on the wall;



4. Close touch panel

Look at the direction of touch panel, and then closed the touch panel.

