

TM14 Touch panel music controller

Product Specifications



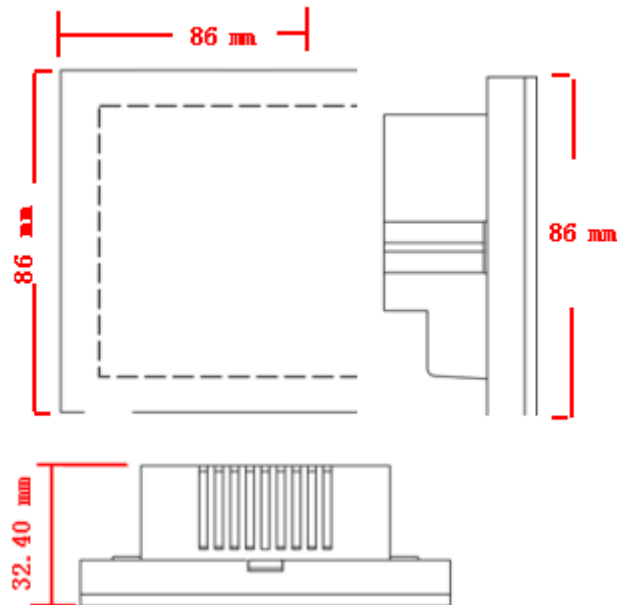
1. Summarization

Touch panel music controller adopt advanced PWM control technology, used for control all kinds lamps that can realize RGB change, this product adopt glass panel design, stylish and beautiful, one key can switch normal mode and music mode, under music mode, music is converted into a signal through the microphone MIC, through audio analysis techniques, the panel will show music spectrum change, while the load lights with the music rhythm changes.

2. Technical parameter

- 2.1 Working voltage: DC12-24V
- 2.2 Working temperature: -20-60°C
- 2.3 Output: Max4A *3CH
- 2.4 Static power consumption: <1w
- 2.5 Output power: 12V<144W; 24V<288W
- 2.6 Connect way: common anode
- 2.7 Net weight: 117g
- 2.8 Gross weight: 195.4g
- 2.9 External dimension: L86*W86*H32.4 (mm)
- 2.10 Packing size: L110*W110*H56 (mm)

3. External Dimension

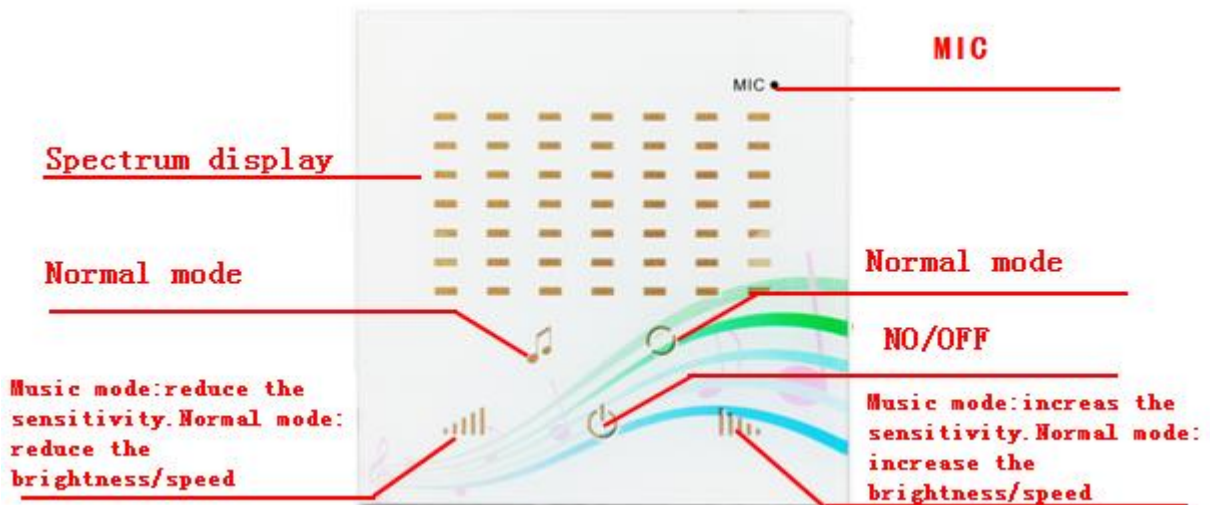


4. Interface Specification



- ① Blue light negative pole
- ② Green light negative pole
- ③ Red light negative pole
- ④ LED light positive pole
- ⑤ Power supply positive pole port
- ⑥ Power supply negative pole port

5.Direction for use



: Under any state, can turn on or off the controller output, open breathing light in the off state.



: Music mode shortcut key, under the music mode, short press this key can cycle switch in 13 kinds of music mode.



: Normal mode shortcut key, under the normal music, short press this key can cycle switch in 21 kinds of normal mode



: Music mode: short press can increase one level of sensitivity, and have 3 levels of sensitivity to adjustable, support the function of long press.

Normal mode: under static mode, short press can increase the brightness, under dynamic mode, short press can increase the speed, support long press function.



: Music mode: short press can decrease one level of sensitivity, and have 3 levels of sensitivity to adjustable, support the function of long press.

Normal mode: under static mode, short press can decrease the brightness, under dynamic mode, short press can decrease the speed, support long press function.

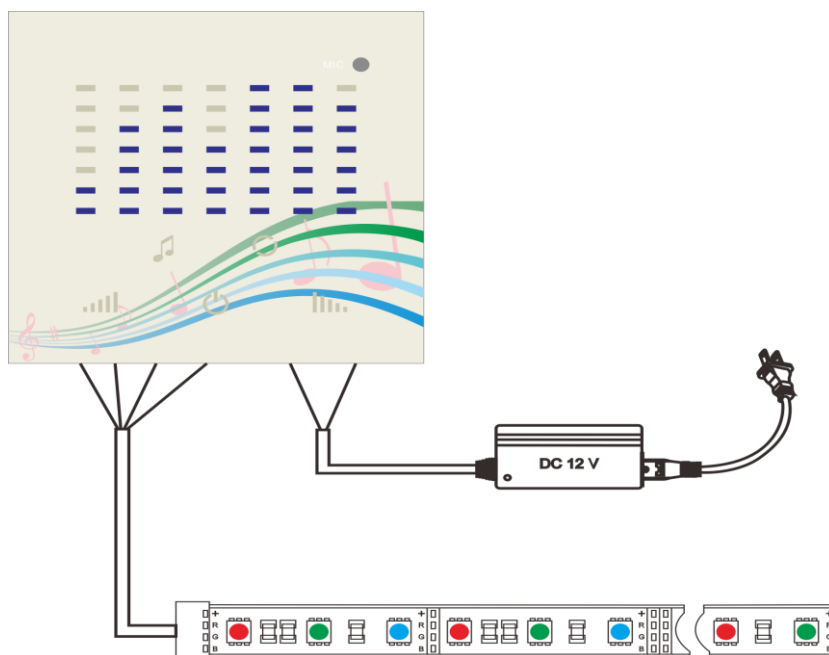
5.1 Music mode table:

No.	Mode	Remark	No.	Mode	Remark
1	Red	The brightness of LED lights follow the music volume and tempo to change	8	Seven color gradual changing	The brightness and color of LED lights follow the music volume and tempo to change
2	Green		9	Seven color random jumpy changing	
3	Blue		10	Six color random slow changing	
4	Yellow		11	Red and green alternating gradual changing	
5	Purple		12	Red and blue alternating gradual changing	
6	Cyan		13	Green and blue alternating gradual changing	
7	White				

5.2 Normal mode table:

No.	Mode	Remark
1	Red	Static mode, brightness is adjustable, speed is nonadjustable, brightness in total 250 level
2	Green	
3	Blue	
4	Yellow	
5	Purple	
6	Cyan	
7	White	
8	Three color jumpy changing	Dynamic mode, speed is adjustable, brightness is nonadjustable, speed in total 25 level
9	Seven color jumpy changing	
10	Three color gradual changing	
11	Seven color gradual changing	
12	Red flashing	
13	Green flashing	
14	Blue flashing	
15	Yellow flashing	
16	Purple flashing	
17	Cyan flashing	
18	White flashing	
19	Red and green alternating gradual changing	
20	Red and blue alternating gradual changing	
21	Green and blue alternating gradual changing	

6. Typical Application



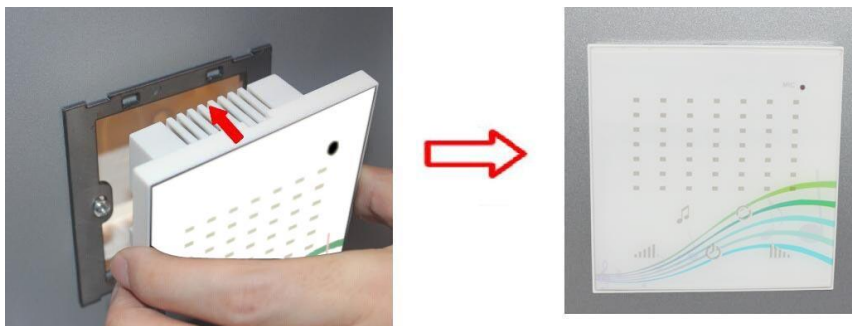
7. Installation Method

7.1 According to the interface description connect the corresponding line, please be careful not to connect the line reverse;

7.2 Use screw to fixed metal cardboard outside the cassette, as shown in below figure:



7.3 Make controller mount inside cassette, as shown in the figure below:



8. Notes

8.1 Connect the load wire at first, following by the power wire; Please ensure short circuit can not occur between connecting wire before you turn on the power;

8.2 The supply voltage of controller ranges in DC12-24V, it may burn out the controller once exceed the voltage.