

TM04 Touch Panel Hand Shape Control

Product Specifications



Contents

1. Summarization.....	2
2. Technical Parameters.....	2
3. External Dimension.....	2
4. Interface Specifications.....	2
5. Instructions for use.....	3
6. Typical Application.....	3
7. Installation Method.....	3
8. Remark.....	4

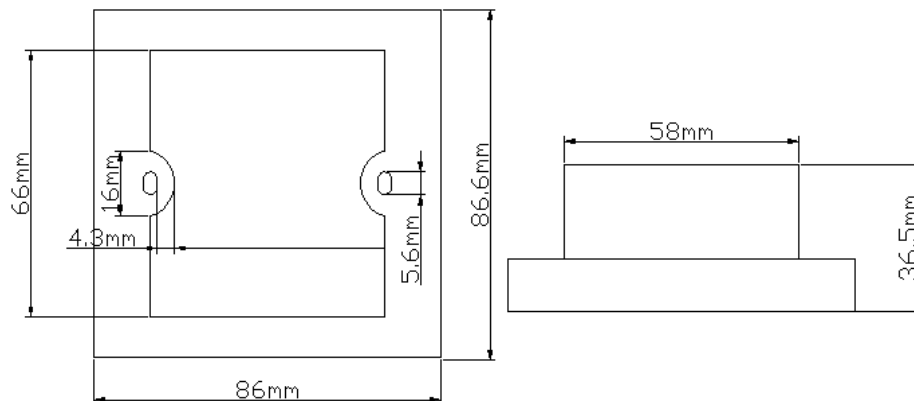
1. Summarization

Touch on dimmers is a level 256 can realize the light of high-grade controller. The glass panel design, appearance beautiful, vogue. Adopting high precision capacitance touch control chip, increased the touch sensitivity, reduces by mistake triggered. Users can according to actual needs, will light moves to a proper brightness.

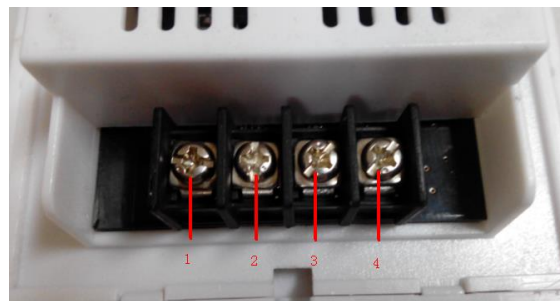
2. Technical Parameters

- 2.1 working temperature: -20-60°C
- 2.2 supply voltage: DC12-24V
- 2.3 Output: 1 Channel
- 2.4 net weight: 138.5g
- 2.5 gross weight: 192.5g
- 2.6 external dimension: L86X W86 X H36 mm
- 2.7 packing size: L110X W110 X H56 mm
- 2.8 output current: <8A
- 2.9 output power: 12V<96W, 24V<192W

3. External Dimension





4. Interface Specifications



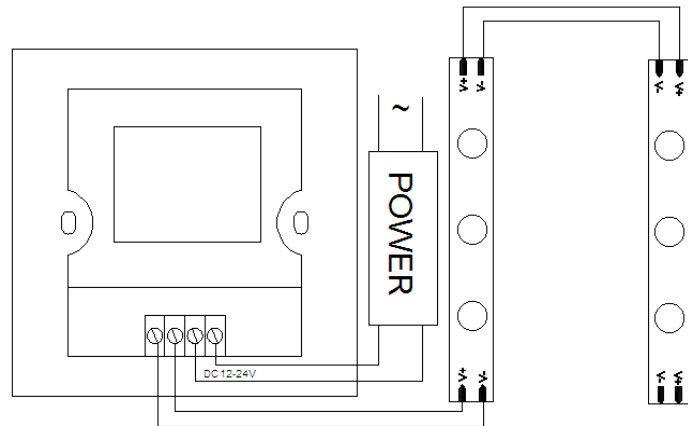
- 4.1 Output: V-
- 4.2 Output: V+
- 4.3 Power: V+
- 4.4 Power: V-

5. Instructions for use:

5.1  : On-Off Key.

5.2  : ILLUM, adjust to the corresponding brightness when touch the key.

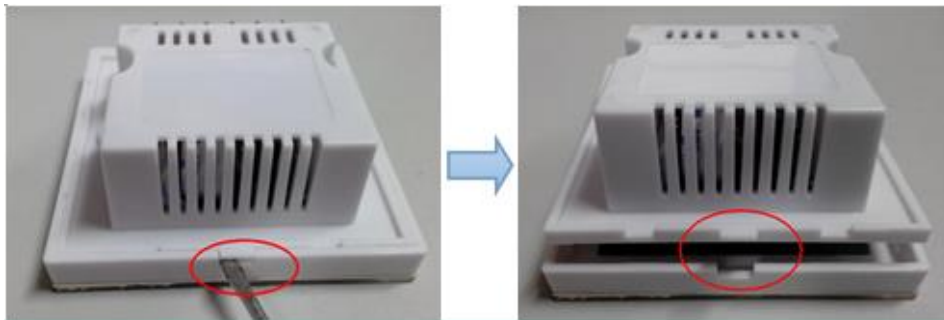
6. Typical Application



7. Installation Method

7.1 Open the touch panel

7.1.1 gently pry gaps in touch panel with a screwdriver, and then you can slowly remove the panel, as shown below;

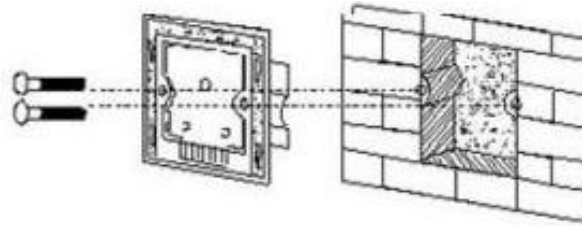


7.1.2 remove the cable. Pull the locking of the wiring seat, and then you can slowly remove the cable, as shown below:



7.2 Wiring: Wiring accord to typical application circuits, please refer to the typical application circuit.

7.3 Install the switch base:As below,install the touch controller on the cassette in the wall after wiring,then tight screw to fix it,install the base on the wall at last.



7.4 Cover touch panel:Wiring accord to step one,Lock tight the cable hasp,cover the touch panel.

8.Remark

8.1 Connect the load wire at first, following by the power wire; **Please ensure short circuit can not occur between connecting wire before you turn on the power;**

8.2 The supply voltage of controller ranges in DC12V~DC24V, it may burn out the controller once exceed the voltage ranges.